

# WriteNow! Series

Single and Parallel In-System Programmers

## First Use Guide

Rev. 1.02



UM00020102EN

# Guided Tutorial

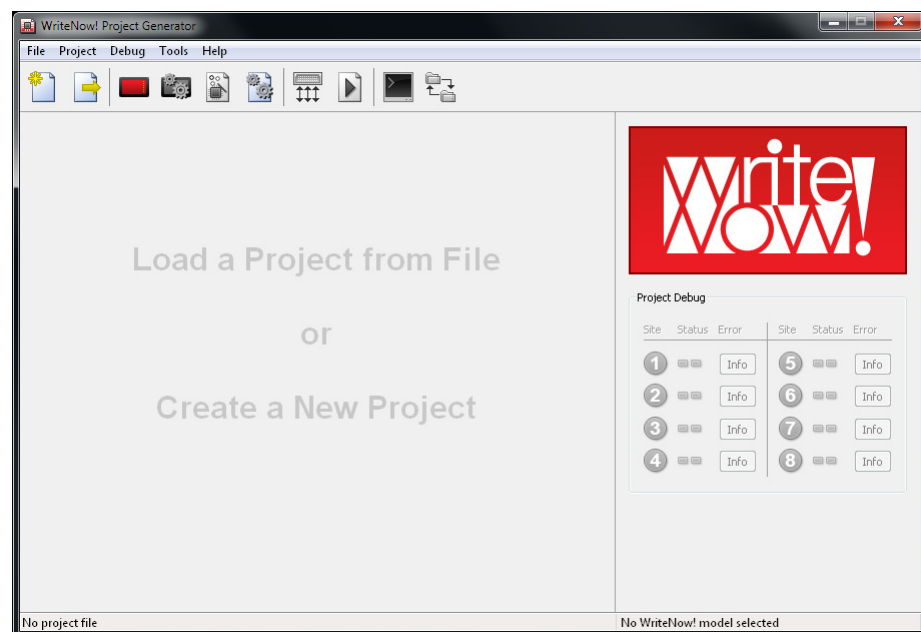
The following tutorial will guide you through the steps required to set up your WriteNow! programmer and create your first programming project.

## 1. Install Software

Insert the Setup CD into your PC and install the WriteNow! software.

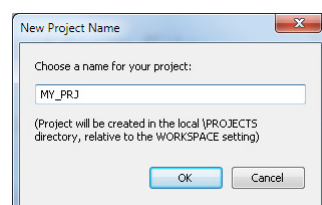
## 2. Launch the Project Generator

Launch the Project Generator application, that is located under **Programs > Algocraft > WriteNow! Software > Project Generator**.



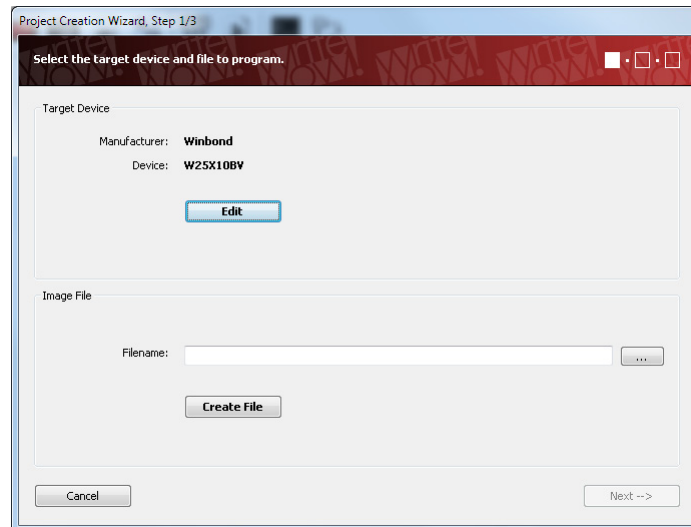
## 3. Create a New Project

Select **File > New Project**, give a name to your programming project, and then follow the Project Creation Wizard steps.

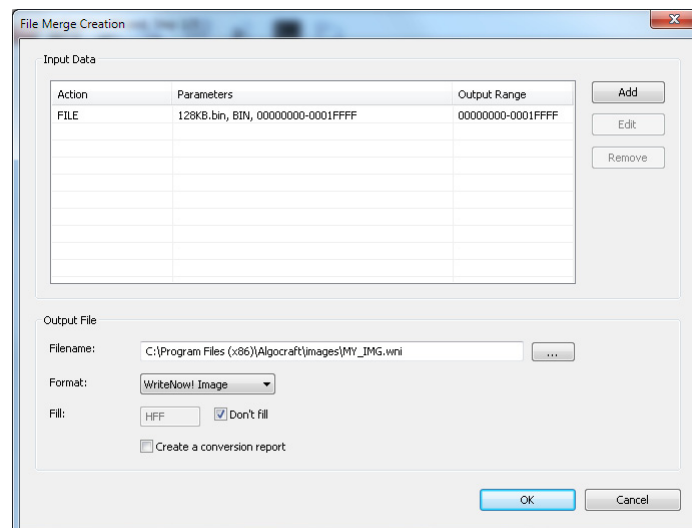


## 4. Create a New Project, Step 1 of 3

In the first Wizard step, specify the target device, by clicking the "Edit" button.



Next, specify the file to be programmed (image file). To create an image file, click the **“Create File”** button. A dedicated window will open.

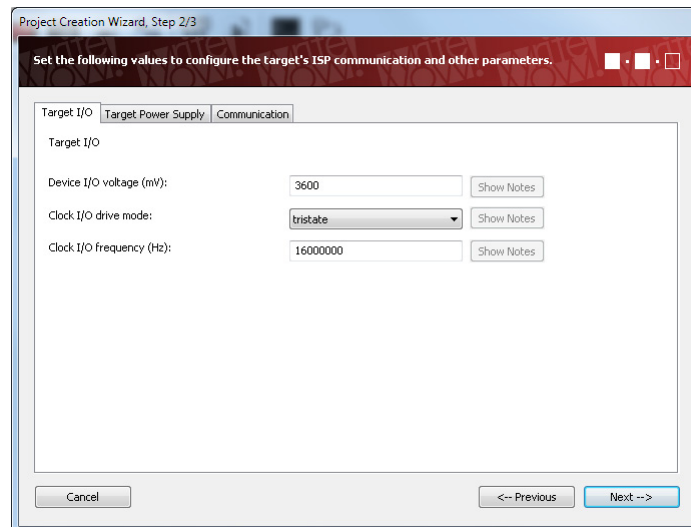


In the Output File section, specify the output filename by clicking the **“...”** button.

Use the **“Add”** button to compose the data that will compose the Image file. Use the **“...”** button to specify the name of the Image file. When done, click **“OK”** to return to the Wizard, and proceed to Step 2.

## 5. Create a New Project, Step 2 of 3

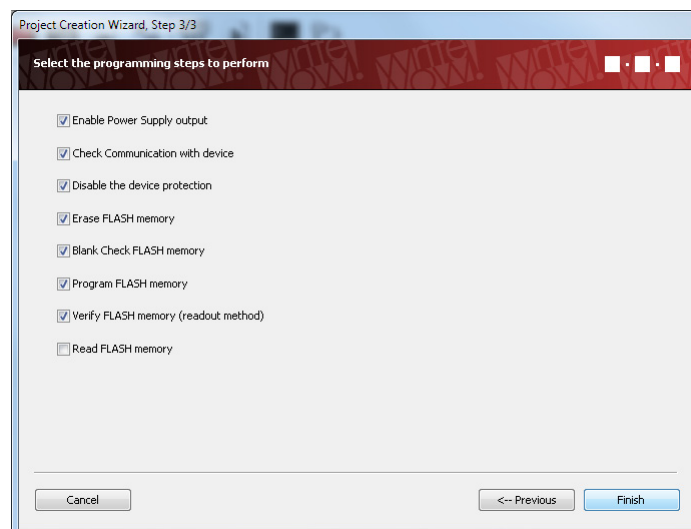
In this step, specify target parameters and connection values. The Wizard will automatically fill all data with typical values for the selected target device.



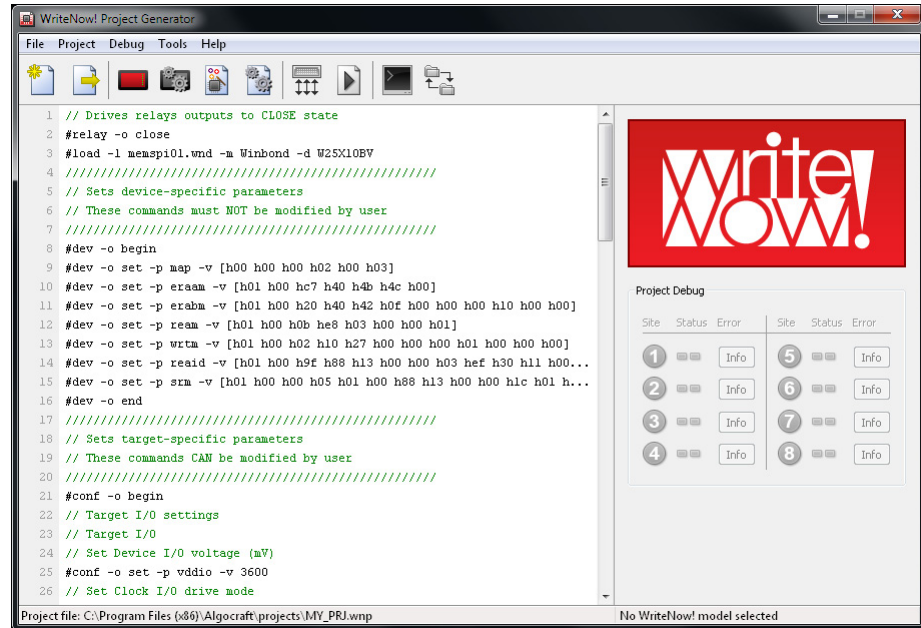
After carefully checking all of the parameters values, proceed to Step 3.

## 6. Create a New Project, Step 3 of 3

In this step you select which programming operation to perform on the target.

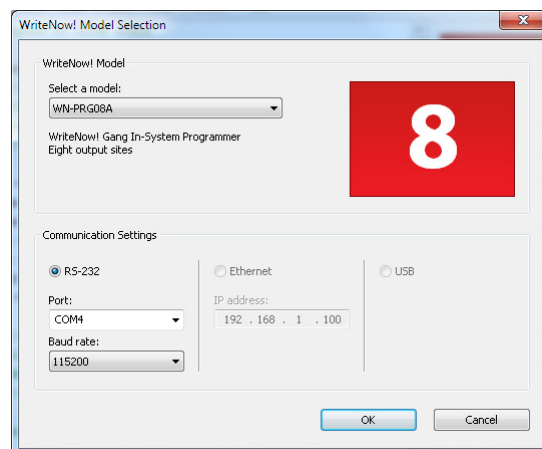


Click **"Finish"** to end the Wizard. At this point, a WriteNow! Programming Project will be created in the **\Projects** directory, relative to the Project Generator application location.



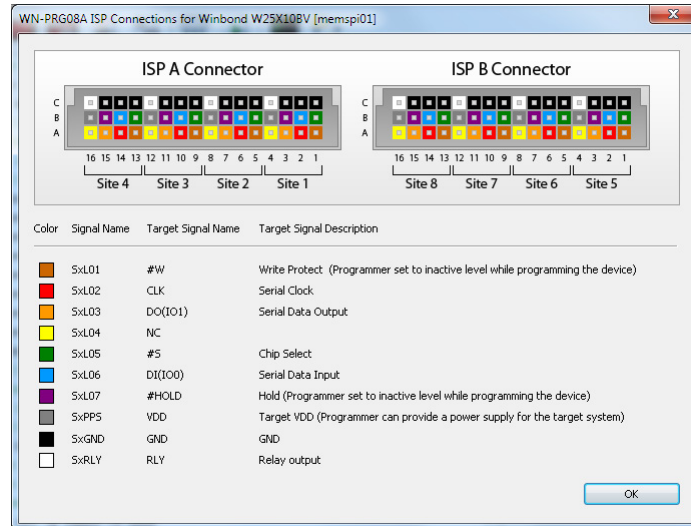
## 7. Configure your WriteNow! Instrument

Choose **Project > Select WriteNow! Model**, and specify your WriteNow! model and communication settings with the PC. Currently, WriteNow! can be connected only through a serial port. WriteNow! communicates at **115,200** bps by default. LAN and USB connections will be supported soon through a free software upgrade.



## 8. Connect to Target Device

Connect WriteNow! to your target system through the ISP connector(s). To view the connections for your selected target device, select **Debug > Show ISP Connections**.

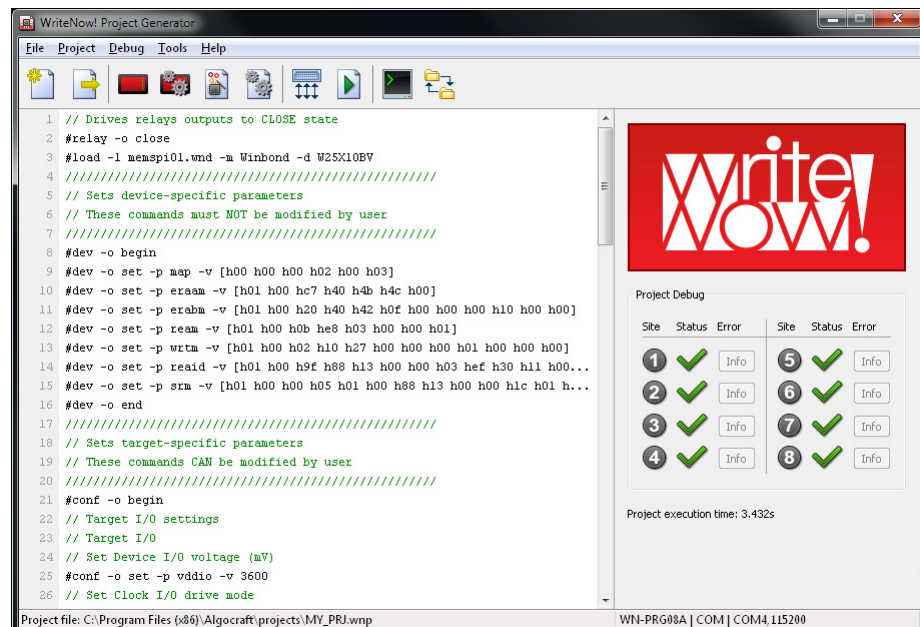


## 9. Startup WriteNow!

Connect WriteNow! to your PC through the provided serial cable. Finally, power up WriteNow! using the provided power supply.

## 10. Program the Target Device

Select **Debug > Run Project**. The Project file (.wnp) and Image file (.wni) will be automatically uploaded to WriteNow! and the project will be executed. Your target device will be programmed.



In case of programming errors, or to change programming parameters/operations, you can relaunch the Project Wizard and review the project settings.

## Manual Project Editing

The Project file created by the Project Wizard is located, by default, in the **\Projects** directory, relative to the Project Generator application location (this location can be changed by specifying a different “workspace” path: to do so, in the Project Generator, select **Project > Edit Miscellaneous Settings** and modify the **Workspace** setting).

The generated project file is a text file and, if necessary, can be edited using any text editor. Please note, however, that once the file is modified by the user, it can be opened by the Project Generator but the Project Wizard will not be available.

## Where to Go from Here

Congratulations! You have learnt how to use the Project Generator to create and execute a typical programming project. Additionally, WriteNow! can be controlled in three other ways:

1. By manually sending commands and receiving answers, using the Project Generator Terminal or any other terminal application;
2. By configuring the instrument so that it can work in standalone, that is without a connection to a PC;
3. By building your own PC software that interfaces to the instrument.

Please read the WriteNow! User’s Manual for details.